



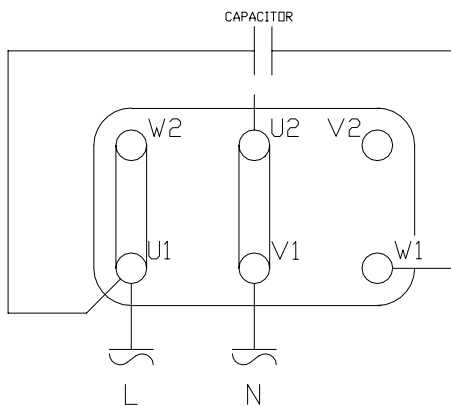
## SINGLE PHASE DUAL VOLTAGE

### GENERAL SPECIFICATIONS:

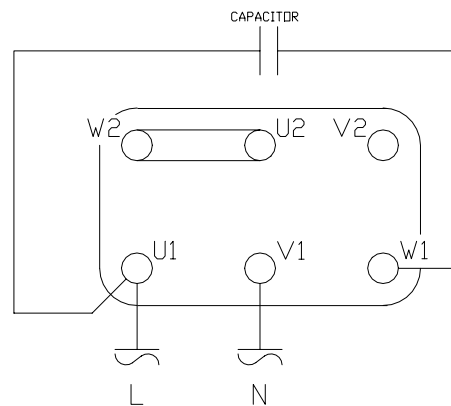
- 1- **Type:** Single phase AC MOTOR - IEC 60034
- 2- **Marks:** cURus, CE
- 3- **Poles:** 2
- 4- **Frequency:** 60 Hz
- 5- **Insulation Class:** F
- 6- **Enclosure:** TEFC
- 7- **Protection:** IP 55
- 8- **Thermal Protector:** KLIXON 140 °C
- 9- **Service Factor:** 1.0
- 10- **Max. Ambient:** 40°C
- 11- **Duty:** Cont.
- 12- **Construction:** Aluminium frame

POWER Hp	VOLTAGE V	SPEED min <sup>-1</sup>	FLA A	STARTING CURRENT A	POWER FACTOR cos φ	CAPACITOR μF
1/3	115-208/230	3330	3.5 / 1.7	12.3 / 6.0	0.97	16.0 - 400 V
1/2	115-208/230	3360	4.8 / 2.6	16.8 / 9.1	0.96	16.0 - 400 V
3/4	115-208/230	3450	9.8 / 4.9	46.1 / 23.0	0.95	20.0 - 400 V
1	115-208/230	3450	13.0 / 7.2	49.4 / 24.7	0.66	31.5 - 400 V
1 ½	115-208/230	3330	13.6 / 7.3	54.4 / 29.2	0.97	50.0 - 400 V
2	115-208/230	3440	24.0 / 12.0	79.2 / 39.6	0.90	70.0 - 400 V
3	115-208/230	3425	31.5 / 16.0	154.4 / 78.4	0.85	60.0 - 400 V

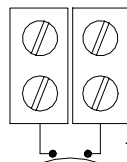
### LOW VOLTAGE 115 V - 60 Hz



### HIGH VOLTAGE 208-230 V - 60 Hz



THERMAL PROTECTION NORMALLY CLOSED



THERMAL CUT-OFF



**THREE PHASE MOTOR**

**GENERAL SPECIFICATIONS:**

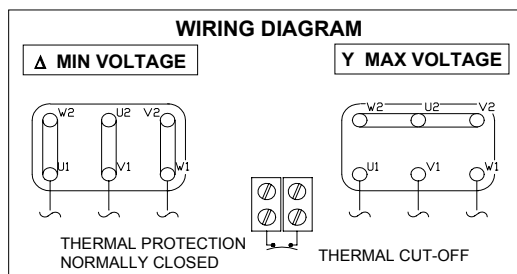
- |  |   |
|--|---|
| <ol style="list-style-type: none"> <li>1. Type: 3-phase AC Motor IEC 60034</li> <li>2. Marks: cURus, CE</li> <li>3. Poles: 2</li> <li>4. Insulation class: F</li> <li>5. Frequency: 60 hz / 50 hz</li> <li>6. Enclosure: TEFC</li> </ol> | <ol style="list-style-type: none"> <li>7. Protection</li> <li>8. Thermal protector: Klixon 150° C</li> <li>9. Service factor: 1.15</li> <li>10. Max. Ambient 40° C</li> <li>11. Duty: Continuous</li> <li>12. Construction: aluminum frame</li> </ol> |
|--|---|

POWER		SIZE	60 HZ			50 HZ			STARTING CURRENT RATIO*	CABLE ENTRY 1***	CABLE ENTRY 2
HP	KW		VOLTAGE	FLA 208 / 460	POWER FACTOR cos φ	VOLTAGE	FLA 230 / 400 (200 V)	POWER FACTOR cos φ			
0.33	0.25	63	208-230/460	1.5 / 0.7	0.75	230/400	1.4 / 0.8	0.70	3.9	M16	M20
0.5	0.37	63	208-230/460	2.3 / 1.0	0.79	230/400	2.1 / 1.2	0.73	3.6	M16	M20
0.75	0.55	71	208-230/460	2.7 / 1.2	0.85	230/400	2.6 / 1.5	0.78	3.8	M16	M20
1	0.75	80	208-230/460	3.3 / 1.5	0.84	230/400	3.5 / 2.0	0.78	5.0	M20	M25
1.5	1.1	80	208-230/460	5.0 / 2.3	0.86	230/400	4.5 / 2.6	0.82	5.6	M20	M25
2	1.5	90	208-230/460	6.3 / 2.9	0.82	230/400	6.1 / 3.5	0.82	5.0	M20	M25
3	2.2	90	208-230/460	9.0 / 4.1	0.87	230/400	8.5 / 4.9	0.81	7.1	M20	M25
4	3.0	90	208-230/460	11.2 / 5.9	0.80	230/400	11.8 / 6.8	0.80	7.0	M20	M25
		100	208-230/460	12.9 / 6.1	0.85	230/400	11.6 / 6.7	0.85	6.0	M25	M20
5.5	4.0	100	208-230/460	17.5 / 8.1	0.88	230/400	14.0 / 8.1	0.88	6.2	M25	M20
7.5	5.5	112	208-230/460	20.0 / 9.5	0.86	230/400	19.4 / 11.2	0.85	7.6	M25	M20
10	7.5	112	208-230/460	26.0 / 12.5	0.88	230/400	25.6 / 14.8	0.87	8.2	M25	M25
15	11.0	132	208-230/460	40.0 / 21.7	0.84	230/400	37.5 / 21.7	0.84	6.9	M32	M32
20**	15.0	132**	208-230/460	54.0 / 26.0	0.86	200/400	(61.0) / 30.5	0.82	7.0	M32	M32
		160	208-230/460	54.0 / 29.8	0.85	230/400	51.6 / 29.8	0.85	8.1	M40	M40
25	18.5	160	208-230/460	63.0 / 34.8	0.87	230/400	60.0 / 34.8	0.87	8.5	M40	M40
30	22.0	160	208-230/460	72.0 / 41.5	0.87	230/400	72.0 / 41.5	0.87	8.4	M40	M40

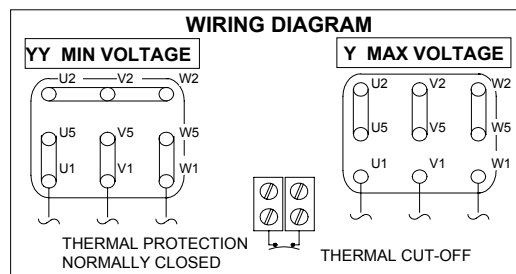
\* FLA x starting current ratio = starting current

\*\* 9 leads motor applicable to 20 hp motors with 132 frame (MS / MD series)

\*\*\* Cable entry 1 includes cable gland



**6 LEADS MOTORS.**  
 208-230/460 V - 60 Hz  
 230/400 V - 50 Hz



**\*\* 9 LEADS MOTOR. APPLICABLE TO 20hp SIZE 132**  
 208-230/460 V - 60 Hz  
 200/400 V - 50 Hz

*Specifications subject to change without notice. Alternate motor suppliers may be used.*