



**FPZ, Inc**  
 150 N. Progress Drive  
 Saukville, WI 53080 - U.S.A.  
 Tel. (262) 268-0180  
 Fax (262) 268-0415  
 E-mail usa@fpz.com

REGENERATIVE BLOWERS - PRESSURE  
**SCL K03 / K04 / K05 / K06**  
**MS SERIES - MOR RANGE**  
 SN 1874-7 1/2

**TECHNICAL CHARACTERISTICS**

- Aluminium alloy construction
- Smooth operation
- High efficiency impeller
- Maintenance free
- Mountable in any position
- Recognized TEFC - cURus motor

**OPTIONS**

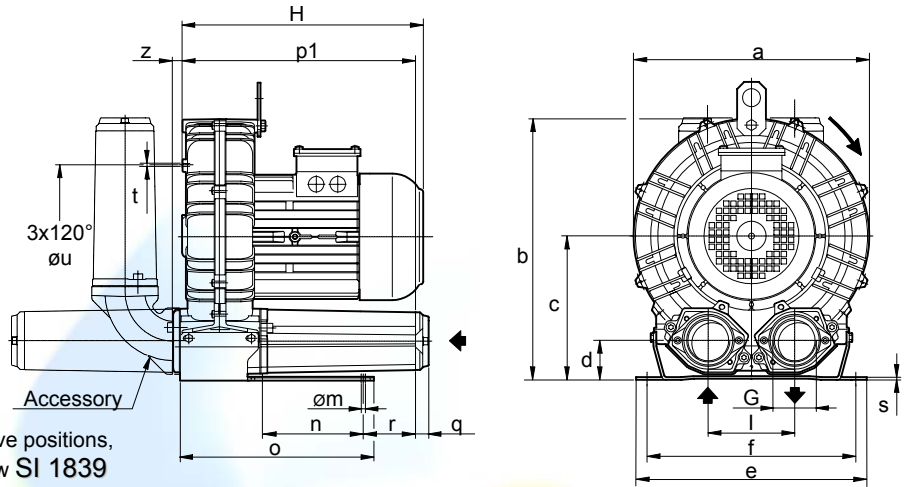
- Special voltages (IEC 38)
- Surface treatments

**ACCESSORIES**

- Inlet and/or inline filters
- Additional inlet/outlet silencers
- Safety valves
- Flow converting device
- Optional connectors

Dimensions in inches.  
 Dimension for reference only.

Possible alternative positions,  
 please refer to drw SI 1839



| Model  | a     | b     | c    | d    | e     | f     | G         | l    | m    | n    | o     | p1    | q    | r    | s    | t  | u    | z    |
|--------|-------|-------|------|------|-------|-------|-----------|------|------|------|-------|-------|------|------|------|----|------|------|
| K03-MS | 9.49  | 10.55 | 5.79 | 1.69 | 9.06  | 8.07  | 1"1/4 NPT | 3.39 | 0.39 | 3.27 | 5.59  | 8.07  | 0.71 | 2.95 | 0.16 | M6 | 5.51 | 0.47 |
| K04-MS | 11.22 | 12.40 | 6.77 | 1.93 | 10.04 | 8.86  | 1"1/2 NPT | 4.02 | 0.47 | 3.74 | 6.73  | 8.74  | 0.71 | 2.76 | 0.16 | M6 | 6.89 | 0.71 |
| K05-MS | 12.87 | 14.37 | 7.87 | 2.13 | 12.60 | 10.24 | 2" NPT    | 4.72 | 0.59 | 4.53 | 10.43 | 12.60 | 0.71 | 3.86 | 0.16 | M8 | 7.87 | 0.75 |
| K06-MS | 14.80 | 15.47 | 8.07 | 2.13 | 12.80 | 11.42 | 2" NPT    | 4.92 | 0.59 | 5.51 | 10.71 | 13.15 | 0.71 | 3.35 | 0.16 | M8 | 9.45 | 0.75 |

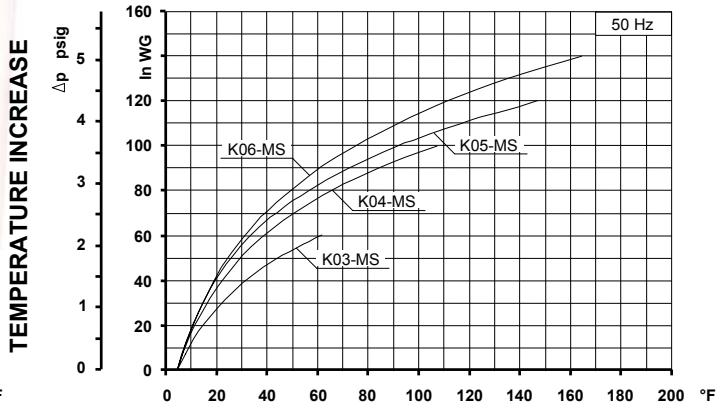
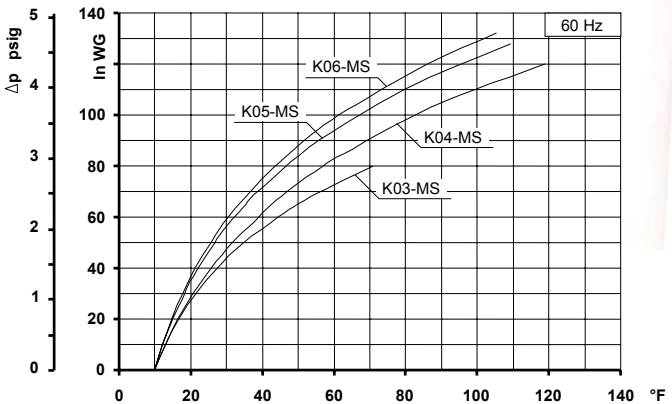
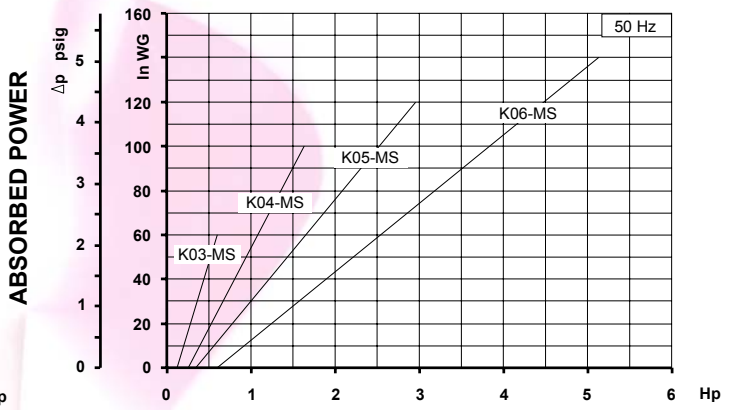
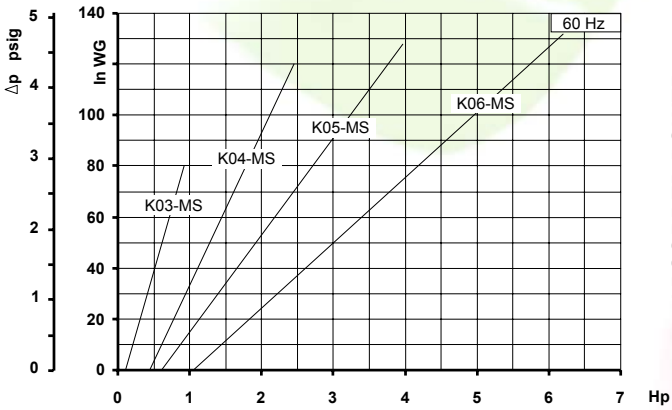
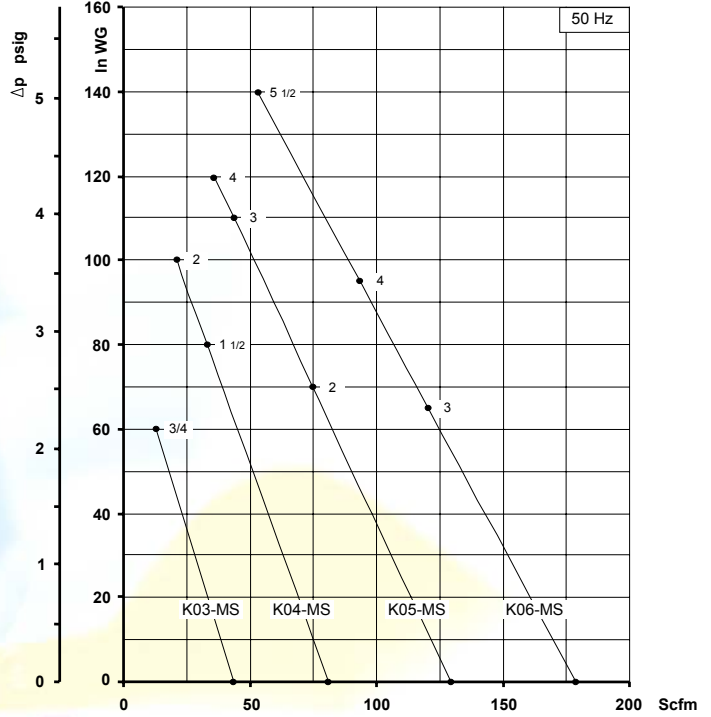
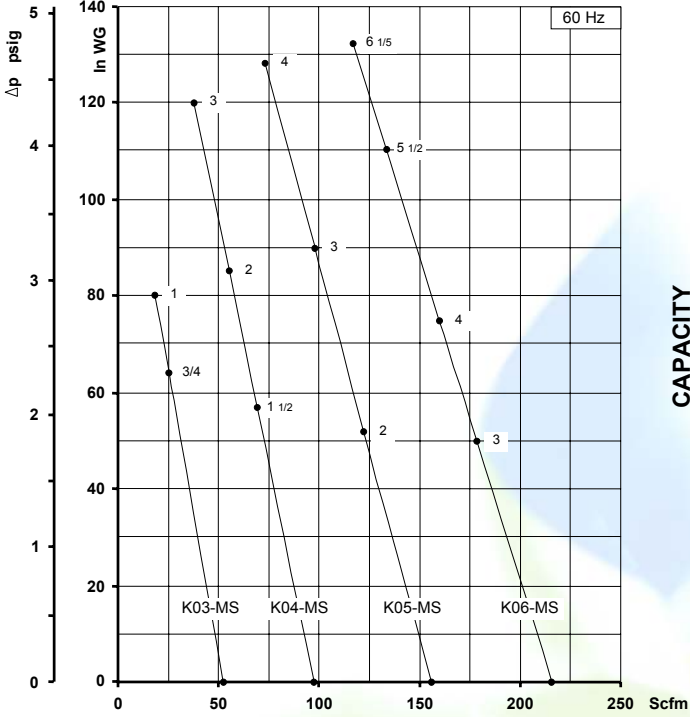
| Model  | Maximum flow Scfm |                | Installed power Hp   |                | Maximum differential pressure Δp (In WG) |                | Noise level Lp dB (A) <sup>(1)</sup> |                | Overall dimensions H Inches | Weight Lbs |
|--------|-------------------|----------------|----------------------|----------------|------------------------------------------|----------------|--------------------------------------|----------------|-----------------------------|------------|
|        | 60 Hz 3500 rpm    | 50 Hz 2900 rpm | 60 Hz 3500 rpm       | 50 Hz 2900 rpm | 60 Hz 3500 rpm                           | 50 Hz 2900 rpm | 60 Hz 3500 rpm                       | 50 Hz 2900 rpm |                             |            |
|        | K03-MS            | 52             | 43                   | 3/4            | 3/4                                      | 64             | 60                                   | 62.0           | 60.0                        | 10.43      |
| K04-MS | 98                | 81             | 1 1/2                | 1 1/2          | 58                                       | 80             | 64.8                                 | 62.8           | 11.65                       | 36.40      |
|        |                   |                | 2                    | 2              | 85                                       | 100            | 65.0                                 | 63.0           | 13.78                       | 43.00      |
|        |                   |                | 3                    | -              | 120                                      | -              | 65.2                                 | -              | 13.78                       | 49.60      |
| K05-MS | 156               | 129            | 2                    | 2              | 52                                       | 70             | 70.5                                 | 68.5           | 13.20                       | 51.80      |
|        |                   |                | 3                    | 3              | 90                                       | 110            | 70.8                                 | 68.8           | 13.20                       | 58.40      |
|        |                   |                | 4                    | 4              | 128                                      | 120            | 71.1                                 | 69.1           | 14.40                       | 67.20      |
| K06-MS | 216               | 179            | 3                    | 3              | 50                                       | 65             | 73.0                                 | 71.0           | 13.54                       | 68.70      |
|        |                   |                | 4                    | 4              | 75                                       | 95             | 73.3                                 | 71.3           | 14.17                       | 71.65      |
|        |                   |                | 5 1/2                | 5 1/2          | 110                                      | 140            | 73.6                                 | 71.6           | 14.17                       | 77.60      |
|        |                   |                | 6 1/5 <sup>(2)</sup> | -              | 132                                      | -              | 73.9                                 | -              | 14.45                       | 77.60      |

(1) Noise measured at 1 m distance with inlet and outlet ports piped, in accordance to ISO 3744.  
 (2) No cURus motor

- For proper use, the blower should be equipped with inlet filter and safety valve; other accessories available on request.
- Ambient temperature from +5° to +104°F.
- Specifications subject to change without notice.



REGENERATIVE BLOWERS - PRESSURE  
**SCL K03 / K04 / K05 / K06**  
**MS SERIES - MOR RANGE**  
 SN 1874-7 2/2



Curves refer to air at 68°F temperature and 29.92 In Hg atmospheric pressure (abs) measured at inlet port.  
 Values for flow, power consumption and temperature rise: +/-10% tolerance.  
 Data subject to change without notice.